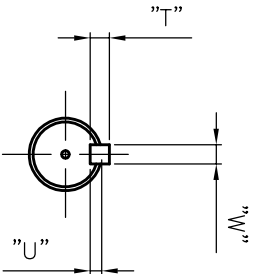
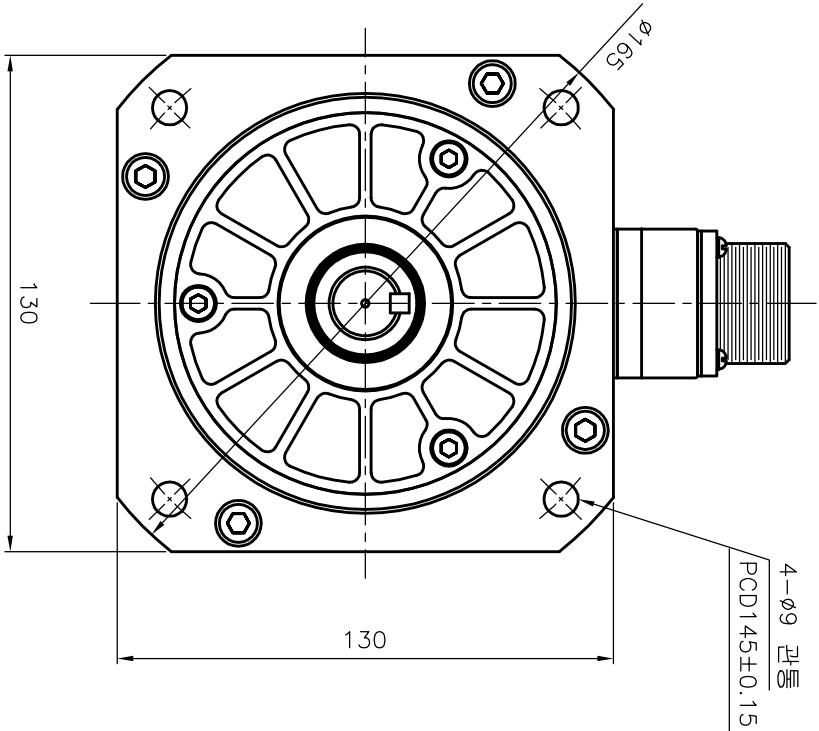
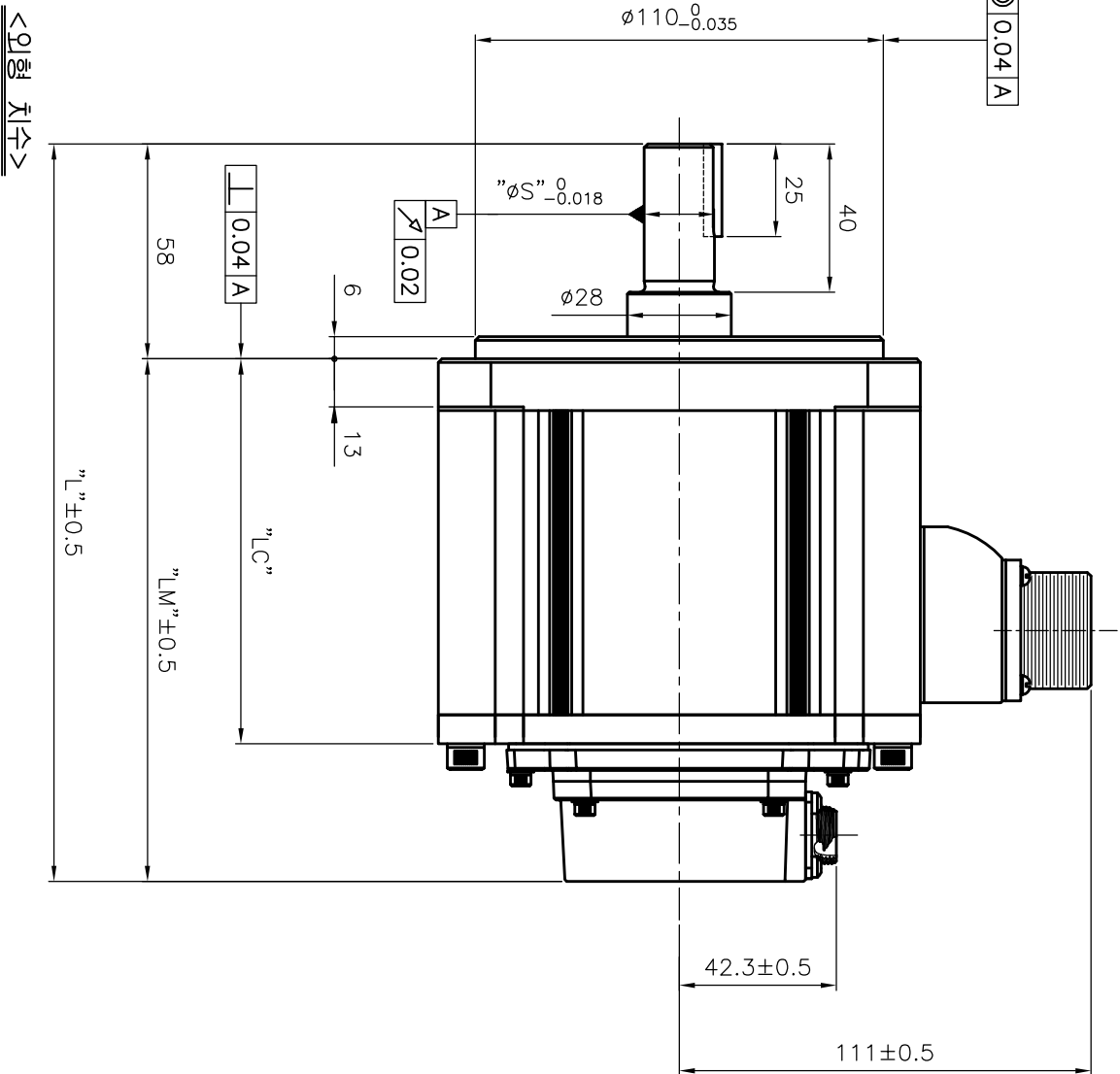


요수명				품번	DESCRIPTION	재질	규격	비고
ITEM	GO1	GO2	GO3	GO4			SPECIFICATION	REMARK
					01	Out Line	APM-EE09A/06D/05G/03MM3K	Key Type
	1				02	Out Line	APM-EE15A/11D/09G/06MM3K	Key Type
1					03	Out Line	APM-EE22A/16D/13G-/09MM3K	Key Type
1					04	Out Line	APM-EE30A/22D/17G/12MM3K	Key Type



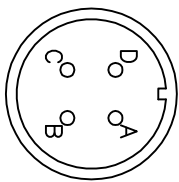
<Shaft Dimensions>



군	번	모델명	L	LM	LC	S	T	W	U	중량(kg)
G01		APM-EE09AM3K								
		APM-EE06DM3K	181	123	85.8	19	5	5	3	4.7
		APM-EE05GM3K								
		APM-EE03MM3K								
G02		APM-EE15AM3K								
		APM-EE11DM3K	199	141	103.8	19	5	5	3	6.2
		APM-EE09GM3K								
		APM-EE06MM3K								

군	번	모델명	L	LM	LC	S	T	W	U	중량(kg)
G03		APM-EE22AM3K								
		APM-EE16DM3K	217	159	121.8	22	6	6	3.5	7.8
		APM-EE13GM3K								
		APM-EE09MM3K								
G04		APM-EE30AM3K								
		APM-EE22DM3K	235	177	139.8	24	7	8	4	9.4
		APM-EE17GM3K								
		APM-EE12MM3K								

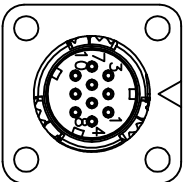
무지정 공차		기본 공차
치수 구분	치수	공차
~3mm 이하	±0.10	
3~6mm 이하	±0.12	
6~10mm 이하	±0.15	
10~18mm 이하	±0.18	
18~30mm 이하	±0.21	
30~50mm 이하	±0.25	
50~80mm 이하	±0.30	
80~120mm 이하	±0.35	
120~180mm 이하	±0.40	
180~250mm 이하	±0.46	
250~315mm 이하	±0.52	
315~400mm 이하	±0.57	
400~500mm 이하	±0.63	
500mm 초과	±0.70	



Pin No.	Phase
A	U
B	V
C	W
D	FG

MS3102A20-4P
(4 pole plug)

<Power Connector 핀 배열>



Pin No.	Encoder Phase	Pin No.	Encoder Phase
1	+5V	6	MA
2	0V	7	MA
3	-	8	SLO
4	VDD_B	9	SLO
5	GND_B	10	SHIELD

SC-CMV1-R10PTG-4
(10 pole plug)

<Encoder Connector 핀 배열>



제품명

AP13 Servo Motor

도면명칭

Out Line (Key Type)

설계

검토

승인

도면번호

EM13GA001

DESIGNED

CHECKED

APPROVED

DWG. NO.

1/1

CHANGE

1

2

3

4

5

참조도면

Ver

1.0