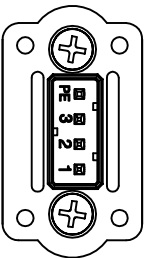
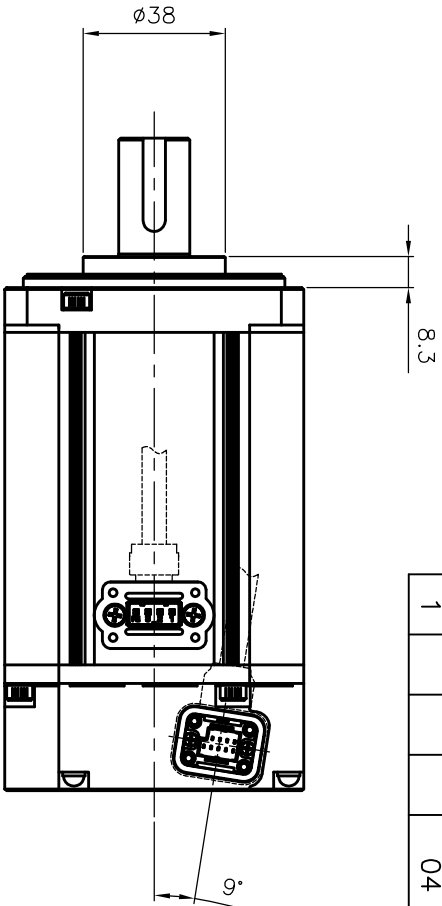


소요 수량				품번 ITEM	품명 DESCRIPTION	재질 MATERIAL	규격 SPECIFICATION	비고 REMARK
G04	G03	G02	G01					
			1	01	Out Line		APMC-FCL04A, 03DMK1	Key, OilSeal Type
		1		02	Out Line		APMC-FCL06A, 05DMK1	Key, OilSeal Type
	1			03	Out Line		APMC-FCL08A, 06DMK1	Key, OilSeal Type
1				04	Out Line		APMC-FCL10A, 07DMK1	Key, OilSeal Type

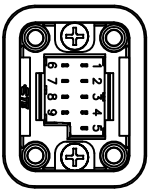
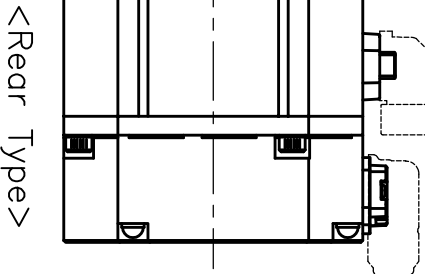
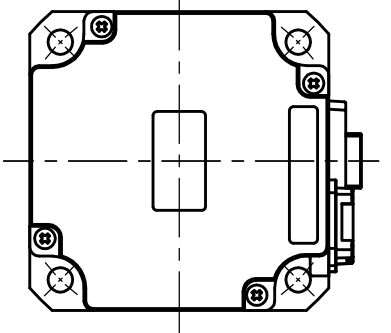
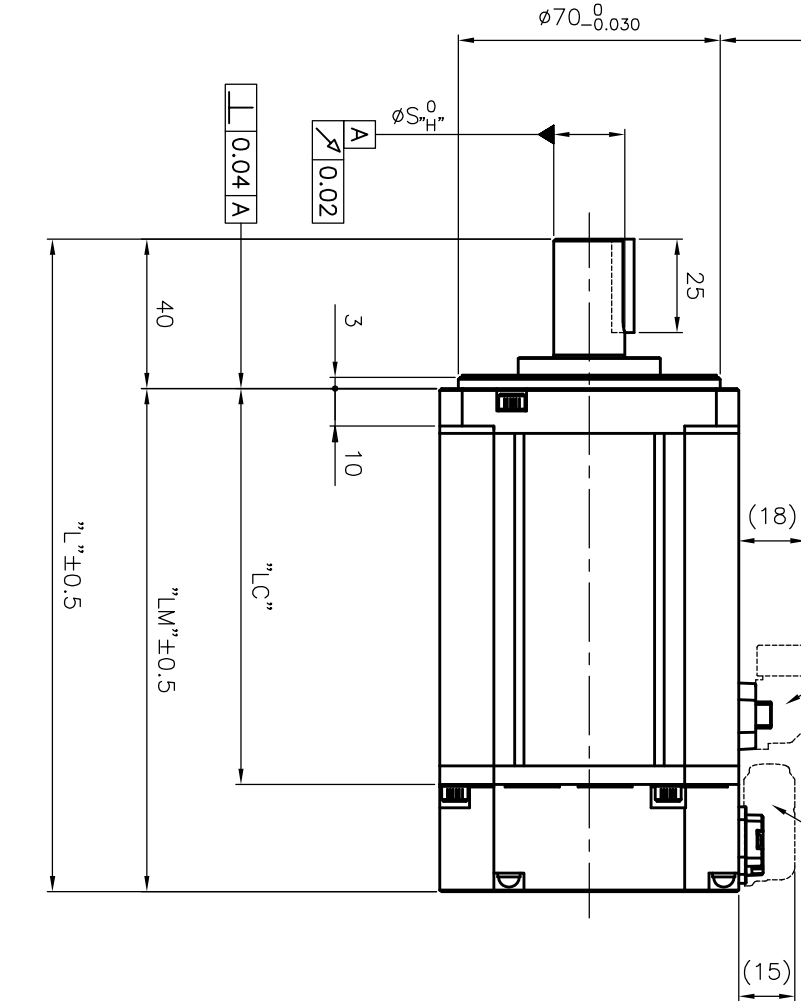
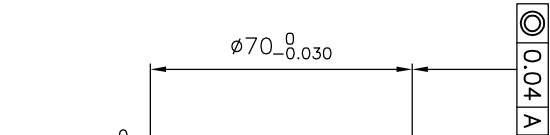
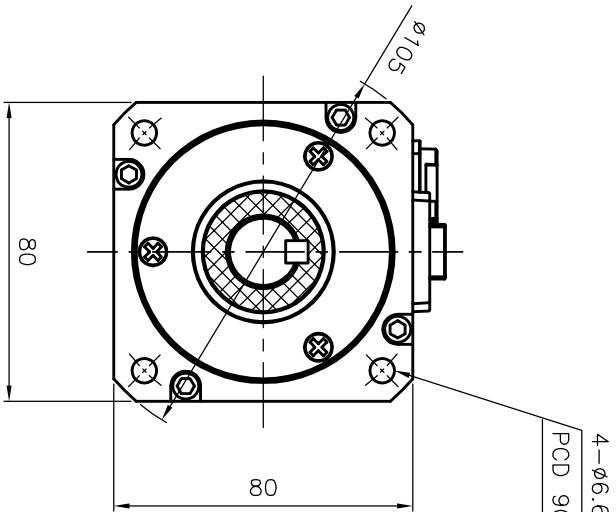


SC-MC4P-A2

Pin No.	Phose
1	U
2	V
3	W
PE	FG

Power Connector

Encoder Connector



BASE ASSY : 2108418-1
HSG : 2108422-1
CONTACT : 2069391-2

<Encoder Connector 핀 배열>

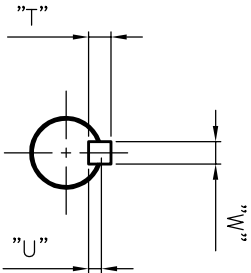
Pin No.	Encoder Phose	Pin No.	Encoder Phose
1	MA	6	MA
2	SLO	7	SLO
3	GND_B	8	VDD_B
4	0V	9	+5V
5	Shield		

<외형 치수>

군	번	Part No.	모델명	L	LM	LC	S	H	T	W	U
G01		47160830	APMC-FCL04AMK1	138.7	98.7	70	14	-0.018	5	5	3
		47160834	APMC-FCL03DMK1								
G02		47160831	APMC-FCL06AMK1	156.7	116.7	88	19	-0.021	6	6	3.5
		47160835	APMC-FCL05DMK1								
G03		47160832	APMC-FCL08AMK1	174.7	134.7	106	19	-0.021	6	6	3.5
		47160836	APMC-FCL06DMK1								
G04		47160833	APMC-FCL10AMK1	192.7	152.7	124	19	-0.021	6	6	3.5
		47160837	APMC-FCL07DMK1								

무지정 공차		
치수 구분	기본 공차	
~3mm 0이하	±0.10	
3~6mm 0이하	±0.12	
6~10mm 0이하	±0.15	
10~18mm 0이하	±0.18	
18~30mm 0이하	±0.21	
30~50mm 0이하	±0.25	
50~80mm 0이하	±0.30	
80~120mm 0이하	±0.35	
120~180mm 0이하	±0.40	
180~250mm 0이하	±0.46	
250~315mm 0이하	±0.52	
315~400mm 0이하	±0.57	
400~500mm 0이하	±0.63	
500mm 초과	±0.70	

<Shaft Dimensions>



정

CHANGE

개



제품명
PRODUCT NAME

FCL Servo Motor

도면명칭
TITLE

Out Line (Key, OilSeal Type)

설계
DESIGNED

검토
CHECKED

승인
APPROVED

도면번호
DWG. NO.

SLM08GA005

1

2

3

4

5

참조도면
REF. NO.

Ver

1.0